



NAAC 'A' Grade Accredited

PROSPECTUS 2023

Learn like the best in the world

DESIGN | ENGINEERING | MANAGEMENT







The world of work is changing rapidly.



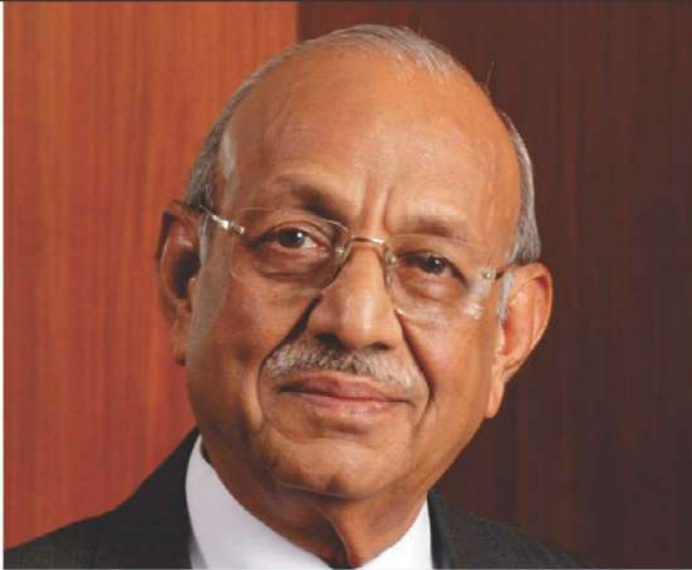
*So is the world of business,
technology, and jobs.*

A photograph of a winding stone wall built on a rocky, hilly landscape. The wall is constructed from stacked stones and follows a path that curves through the terrain. The surrounding vegetation is sparse, with dry grasses and small shrubs. The lighting suggests a warm, golden hour, casting long shadows and highlighting the textures of the rocks and the wall. The overall scene conveys a sense of enduring structure amidst a natural, rugged environment.

*Education must take
bold strides towards a
new landscape.*

At JKLU, we are excited about shaping this horizon and are committed to creating professionals of the future.





Shri Bharat Hari Singhania

Chancellor, JKLU

President, JK Organization

“We as an Industrial Conglomerate are strongly committed to education and meritocracy in the country for more than 125 years. A world where your passions and talents are nurtured and encouraged to blossom, and where you can build life-long relationships with mentors and peers who will guide and support you at every step. This is the world of JK Lakshmipat University, where education and meritocracy have been the driving force for years.

At JKLU, we believe that higher education is not just a means to a degree but a journey of personal and professional growth. We challenge our students to explore new ideas and perspectives, think critically and creatively, and embrace innovation and entrepreneurship. We constantly strive to improve and innovate, to push the boundaries of what is possible, and to create new opportunities for our students to succeed. We are investing in cutting-edge research and technology, building partnerships with industry leaders, and expanding our programmes to meet the evolving needs of today's workforce.”

Chancellor's Message

“We offer our students an education that is contemporary, relevant and combines the best of academic pedagogy along with application-led practical experience”.

Vice Chancellor's Message

“JKLU has been established with the vision of world class education to cater to the needs of students across the country. We offer new-age multidisciplinary programmes in Engineering, Management, and Design.”

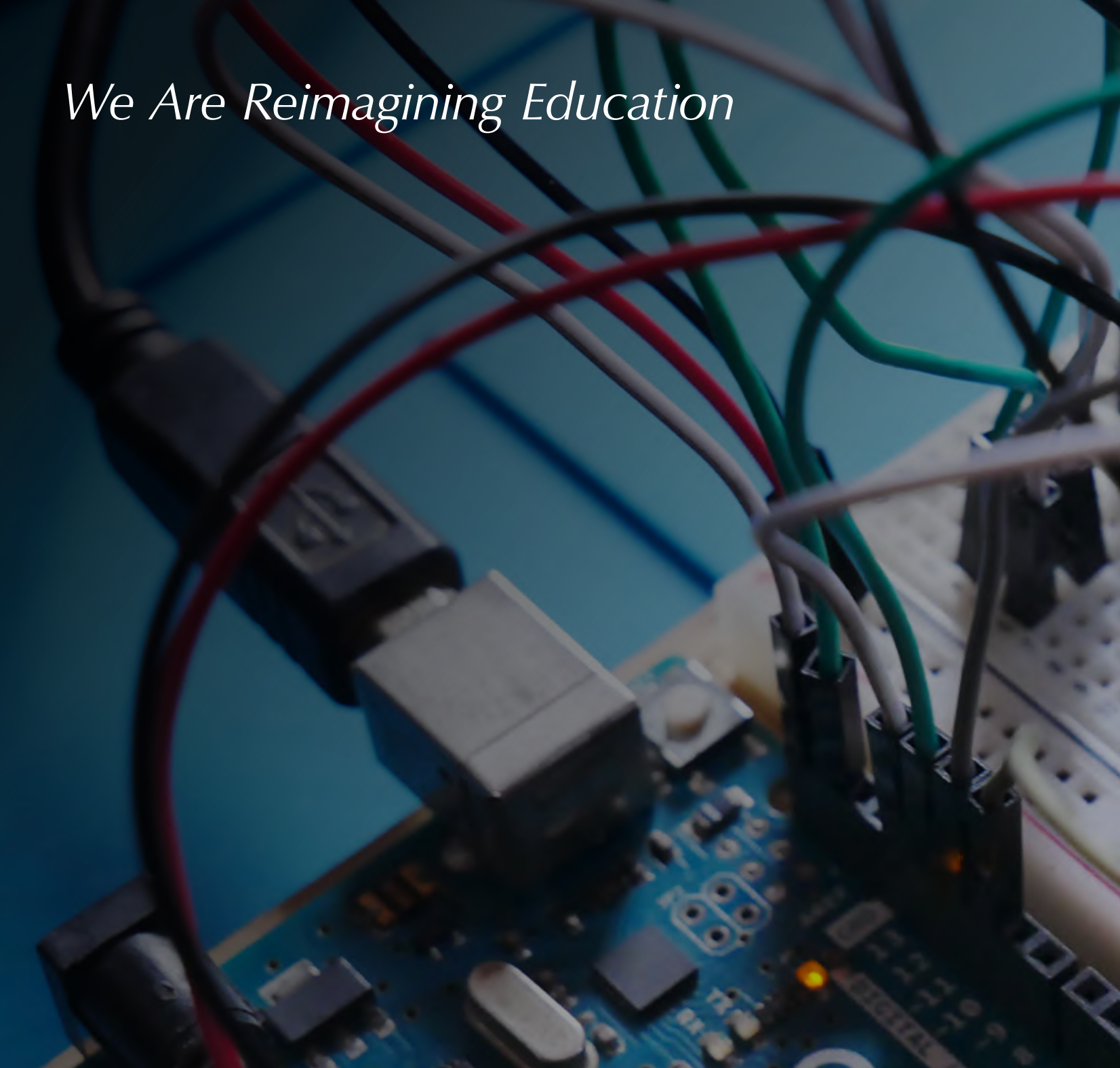


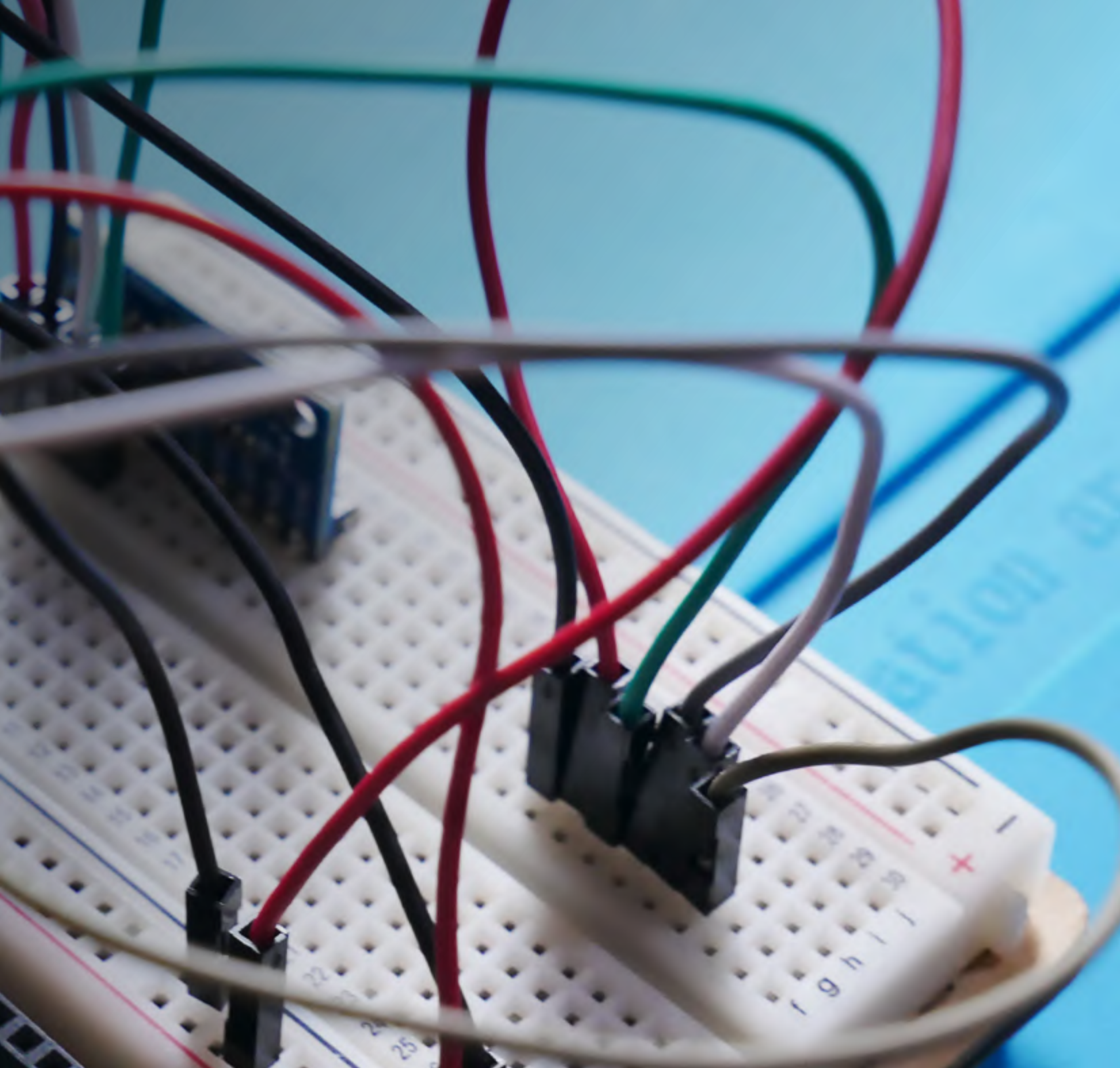
Dheeraj Sanghi

Vice Chancellor, JKLU

“I have seen the transformation of JKLU into one of the top emerging universities in India. The opportunity to pursue cutting-edge, inter-disciplinary B.Tech. Programmes; emphasis on AI, ML design and business; doing a semester at leading US universities and IITs; benefit of project based learning from Olin College of Engineering, USA; learning the skills of critical thinking, communication and problem-solving are some unique aspects of JKLU. Liberal scholarships bring it within reach of any high-performing student. It is an excellent option for students who have not got their choice at IITs”.

We Are Reimagining Education



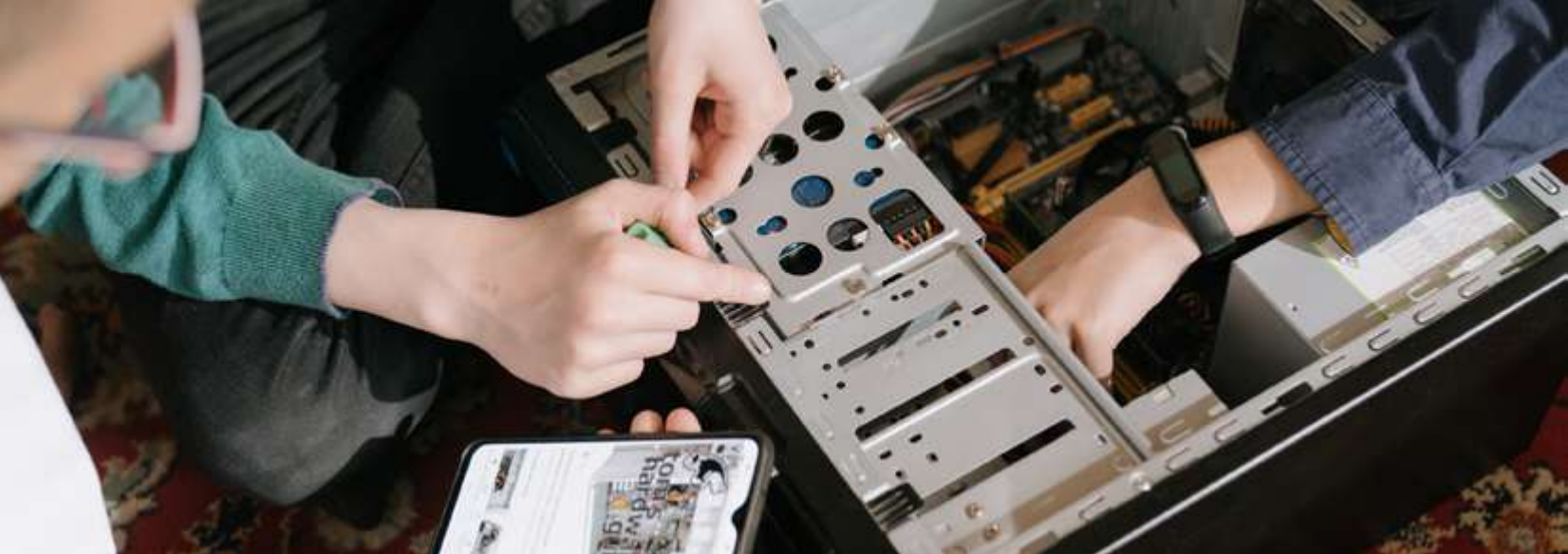


Introduction

*Join us as we build
the country's most innovative
higher education institution.*

Embedding education with entrepreneurial and dynamic thinking. Seeding it with curiosity and technology. Introducing new ways of learning, as well as new critical skills to learn.





Learning @ JKLU

A carefully designed holistic approach built around innovative themes and learning-by-doing provides depth in core domains, along with breadth of perspective, to develop students into successful professionals.

Vision

To be one of India's most innovative higher education institutions. Learning is a continuous process, and, academic excellence a way of life. As today's world is evolving at a fast pace, we at JKLU strongly feel the need to remain in sync with this process of constant change and transformation to make our students not only job-ready, but also future ready, by empowering them with new-age life skills.



***Be life ready,
not just
job ready***

**FUTURE-READY AND TECHNOLOGY-
LED EDUCATION**

Learn how to learn.

Learn how to read, write and think.

Learn how to communicate and introspect.

EXPERIENTIAL &
STUDENT-CENTRIC
LEARNING

*Learn by doing,
by experimenting,
by applying classroom
concepts to real-
world challenges.*



*Explore a larger and exciting universe of
courses & pedagogy.*

BUILDING BRIDGES Learn from the best professors and a world-class curriculum, assisted by high-quality facilitators, practitioners, and teaching assistants on campus.



Enjoy the freedom and the responsibility to change your mind, follow your curiosity, or pursue a new interest.

**MULTIDISCIPLINARY
PERSPECTIVES**

Gain and build insights about the world around you. Develop perspective and awareness with modules, discussions, and seminars on economics, politics, history, social science, and development. Delve into how politics, business, and society are interlinked. Understand how philosophy influences technology, and develop your perception.



*Take charge of your learning.
Choose seamlessly from diverse
courses and specializations.*





14/10

THE DRILL BITS AND KEEP THEM BACK IN THEIR CASE AFTER USE

GROUP - 5

- ANUSHREE
- MADHURIMA
- SHREYA
- SWRAT
- RAHMAN
- VANSHITA

GROUP - 4

- PENCHI
- MANA
- HARSHIT
- URMILA
- SHREYANS
- SAMRIDDHI

ASSIGNMENT - 2

1) DECONSTRUCTION

*Now pursue passion without boundaries,
with world-class resources.*

ACADEMIC

LABORATORIES

From basic workshops to a specialized energy lab and innovation lab, JKLU has 54 state-of-the-art labs to enable access to best tools for students' projects and research.

CLASSROOMS AND

STUDIOS

From the iconic library building that is a source of pride for everybody at JKLU, to the well-appointed amphitheater-style seminar rooms as well as the classroom studio outfitted with audio-visual equipment, the campus is well-equipped with video conferencing facilities and internet. The academic infrastructure recognizes that students today learn through a variety of media, and is well-prepared to foster these interactions.

MAKERSPACE

Makerspace is a collaborative workspace for making, learning, exploring and sharing. The purpose of Makerspace at JKLU is to enable a user or individual to bring ideas to a tactile prototype stage so it can be tried and tested. Makerspace has a vast variety of industrial and high-tech tools to assist and enable users to create and manipulate a wide range of materials like wood, bamboo, plastics, acrylic, and soft and hard metal in wire or sheet form.





Industry Interactions

Benefit from a close and sustained dialogue with industry. Leverage the advantages of mentorship, counselling and work opportunities.

Industry collaborations



ISRO, Centre for IRNSS
Navigation Receiver for Field
Trial & Data Collection



CISCO networking Academy
Provides certification courses
on CCNA, CCNA Security



Fincare Small Finance Bank
Partner in BBA Banking and
Fintech



Ui Path provides
Certification in Robotic
Process Automation.



Microsoft IT Academy
Access to Microsoft IT
Academy tools and softwares

Industry Mentors

(Partial list)

Debraj Tripathy

Former Managing
Director, MediaCom,
South Asia

Jay Dutta

Ex SVP Product
Experience at
Go-MMT Group

Jishnu Changkakoti

Stanford Seed
Consultant;
Ex VP, Sales & Marketing,
Zydus

P Karthikeyan

Senior Interaction
Designer, Intuit

Rajiv Kapuria

Global Business Leader
& Board Member and
Advisor, Deloitte USA

Anupam Deb

Head, User Experience
Design, Oracle

Sanjay Srivastava

Board of Directors,
Origins by Mahindra
World City; IIM Calcutta,
Harvard Business School

Sukanto Roy

Head, UX Design,
Ernst & Young

Samarth Gupta

Technical Solutions and
Industrial Design Specialist,
Autodesk; M.Des., IIT
Delhi; B.Tech., IIT Dhanbad

Vijay Deshpande

VP & Head of Human
Resources, JKTyre &
Industries, Kshitiz Anand
AVP-Design, Paytm

Saurabh Deb

Design Consultant at
BCG X; NID Alumnus

A P Kannan

Head, IT, Delpot

Academic Collaborations



Global Network Of Academic Relationships



- University of Maryland, USA • Domus Academy, Milan, Italy • Ghent University, Belgium
- University of Capetown, South Africa • Cleveland University • The DO School, Berlin
- University of Antwerp, Belgium • University of South Carolina, USA
- Edinburgh Napier University, UK • University of East London, UK
- University of Oklahoma, USA • Amsterdam University of Applied Sciences, Netherlands
- Ball State University, USA • Bond University, Australia • Boston College, USA
- Cornell University, USA • Coventry University, UK • Culs University, The Czech Republic
- Federation University, Australia • Hanyang University, South Korea • Hong Kong University of Science and Technology, Hong Kong • Olin College of Engineering , USA
- Simon Bolivar University, Venezuela • St. Cloud State University, USA • St. Petersburg Polytechnic University, Russia • St. Petersburg State University, Russia

Distinguished Visitors & Awardees



Regular talks, lectures, and interactions with experts and leaders including:

- **Manmohan Singh**, Former Prime Minister of India
- **Pranab Mukherjee**, Former President of India;
- **Kailash Satyarthi**, 2014 Nobel Peace Prize Awardee
- **Lord Meghnad Desai**, Emeritus Professor, London School of Economics
- **K. Kasturirangan**, Member Science Planning Commission, Government of India,
- **Mrityunjay Athreya**, Padma Vibhushan Awardee
- **Dr. R. A. Mashelkar**, Former Director General of CSIR, and Padma Vibhushan Awardee
- **Saurabh Shrivastava**, Co-Founder & Former Chairman of NASSCOM and Padma Shri Awardee



These are among many others, from different walks of life, who enrich our university community and give our students an opportunity to gain from and develop broad perspectives on issues that are important for the world.

Anuradha Annaswamy

Senior Research Scientist, Department of Mechanical Engineering and Director, Active Adaptive Control, MIT

Shubhashis Gangopadhyay

Founder & Research Director, India Development Foundation; Former Advisor to Finance Minister, Government of India

Ashoke Chatterjee

Professor of Economics, Jawaharlal (Design Guru 2022); Former Executive Director and Distinguished Fellow, NID Ahmedabad

Mandayam A. Srinivasan

Founding Director, Touch Lab, MIT USA; Director, UCL Touch Lab, London, UK; VAJRA Professor, IIT Madras, India

Andreas Schneider

Design Professor; Founder: Institute for Information Design Japan, IIDJ; Visiting Faculty, JKLU

Alasdair Roberts

Director, School of Public Policy and Professor of Political Science, University of Massachusetts Amherst

M. H. Bala Subrahmanya

Professor, Indian Institute of Science

Anil D. Sahasrabudhe

Chairman, All India Council For Technical Education (AICTE)

Amit Sheth

Founding Director, Artificial Intelligence Institute, University of South Carolina; Cofounder and Chief Advisor ezDI, LLC

Virender Singh Chauhan

Executive Chairman, National Assessment and Accreditation Council (NAAC)

Santosh Mehrotra

Professor of Economics, Jawaharlal Nehru University; Former Director General, Institute of Applied Manpower Research, Planning Commission, Govt. of India

Sanjeev Mehta

Chairman and Managing Director, Hindustan Unilever Limited

Ray La Raja

Professor of Political Science, University of Massachusetts Amherst

Arundhati Bhattacharya

Former Chairperson, State Bank of India

Visitor Views

“I was impressed by the infrastructure, facilities and more importantly, the passion of the leadership to give quality education through a variety of innovative methods of learning”.

Anil Sahsrabudhe

Chairman, All India Council for Technical Education (AICTE)

“It was a pleasure to visit the campus of JKLU which is a modern university providing quality education with emphasis on research and innovation. I wish them all dearly”.

Shri Pranab Mukherjee

Former President of India

“A commendable attempt at redefining education. May this attempt come out with something truly impactful and worthwhile.”

Ambrish Kumar | IAS

Commissioner and Special Secretary, DoIT & C, Govt of Rajasthan

“I had a lifetime experience during my visit to JKLU. Love the ambition, ambiance, admired the leadership; impressed with the grand vision; found the balance of excellence and relevance to be unique. This is certainly a university that will do the nation proud by ‘pre vaistip’ to a great future”.

Dr. R. A. Mashelkar

Former Director General of CSIR,
and Padma Vibhushan Awardee

“This university is eight years old, has made phenomenol progress, but I believe the best is yet to come. My best wishes for the future growth of this university”.

Dr. Manmohan Singh

Former Prime Minister of India

“Inspirational place, I am sure it is going to do great work in education”.

Vikas Satwalekar

Former Director of NID, Mentor, Graphic Designer

Academic Leadership

Be inspired by a team of accomplished academics who are dedicated to bringing students the best that the world has to offer.



Dheeraj Sanghi

Vice Chancellor



Prof. Sanghi has been a Professor of Computer Science & Engineering at IIT Kanpur. During his association of more than 28 years with IIT-K he has held various leadership positions such as Dean of Academic Affairs. He has also been Director of LNMIIT, Jaipur, and Director, Punjab Engineering College.

A. Balasubramaniam

Director, Institute of Design



Prof. Bala has more than 30 years of experience of design industry and inter-disciplinary teaching. He is known for his work in both the industrial sector and the crafts sector, having done projects with Crafts Council, DC Handicrafts and the UNDP. He has been a consultant to Oxfam GB India, NIIT Ltd., and the National Innovation Foundation.

Renu Jain

Officiating Director & Dean,
Institute of Engineering and Technology



Dr. Renu has more than 31 years of research, teaching and administrative experience in various educational institutions of repute, such as: IIT Delhi, BITS Pilani, IIT Kanpur etc.

Sujit Kumar

Director, Hari Shankar Singhanian
School of Business (HSB)



Prof. Sujit has over 37 years of corporate experience in India, Europe and USA. He has launched Sony Entertainment Television and worked in various domains. He has been a visiting faculty at top business schools for the last 12 years.

Ashwini Sharma

Officiating Director,
Institute of Management



An accomplished faculty in the area of IT/IS, Data Analytics and General Management with over 20 years of teaching, research, training and consulting experience, he has conducted numerous training programs for Executives of various organizations and is regularly invited as a Guest Faculty for FDPs conducted by a number of higher education institutes.



Sudhir Raniwala
Dean, Faculty Affairs



Jyotiprakash CR Naidu
Dean, Research and Development



Umesh Gupta
Dean, Academic Affairs



Amit Kumar Sinhal
PhD (Computer Science and Engineering), Rajeev Gandhi Technical University, Bhopal



Rajlakshmi Nayak
PhD (Mechanical Engineering),
IIT Madras



Devanuj Kanta Balakrishnan
Dean, PhD, IIT Bombay; M.Des.;
IIT Delhi; B. Arch, IIT Roorkee



Apoorv Bamba
University of Cape Town; Founder,
Coach & Catalyst for Entrepreneurship



Devika Kataria
PhD (Microelectronics), IIT Kanpur



Kedar Sharma
PhD (Civil Engineering), IIT Kanpur



Pushpendra Singh
PhD (Electrical Engineering),
MNIT, Jaipur



Ankur Kulshrestha
Chartered Accountant, EMP, IIM
Calcutta; Former Manager, E&Y



Manushi Gupta
PhD (Mathematics), IIT (BHU), Varanasi



Praveen Arora
PGDM, IIM Calcutta, B. Tech, IIT Delhi



Upasana Singh
MBA, PhD, IIT Kharagpur



Devendra Bhavsar
M.Tech. (CSE), IIT Bombay



Taruna Sunil
PhD (Computer Science), Banasthali
University



Pranab Roy

PhD (Information Technology),
IEST Shibpur



Anirudha Biswas

Red Dot Design Awardee; M.Des., NID
Ahmedabad; Former Designer—Godrej

**OVER 36% ALUMNI OF IITS, IIMS, NID & NOTABLE
FOREIGN INSTITUTIONS**

OVER 71% PHDS FROM LEADING INSTITUTIONS

**LEARN FROM THE BEST FACULTY IN INDIA &
OVERSEAS**



Afreen Gani Faridi

Pursuing PhD, JNU Delhi,
M.Phil, JNU Delhi



Suranjana Satwalekar

Exhibition Designer; Founder,
Satwalekar Design Studio;
Alumnus, NID Ahmedabad

The JKLU faculty body is a combination of full-time academics committed to helping students flourish in a highly-qualified academic campus environment, and a wide network of visiting experts and professionals from leading universities, centres and organizations from India and across the world.

Academic Advisory Board



Prof. Sunand Bhattacharya

Associate Vice Provost, Design and Innovation Strategies, Boston College, USA; Former Adjunct Professor, Olin College, USA

Dr. Prabhu Aggarwal

Vice Chancellor of Bennett University
Former Professor of Management and Assistant Dean at William & Mary University, USA President & Founder, Eduserve-global LLC



Dr. Vijay Kumar

Dean, Penn Engineering and Professor, University of Pennsylvania, USA

Lt. Gen. Arun K Sahni

Indian Army Strategic Analyst and Defense Consultant



To strengthen the academic environment at JKLU, we have an Academic Advisory Board of eminent academics who help ensure that the University's programmes and curricula are contemporary and future-ready.



Dr. Sartaj Sahni

Distinguished Professor of Computer Science,
University of Florida, USA; Member of the European
Academy of Sciences; Fellow of IEEE, ACM, AAAS,
and Minnesota Supercomputer Institute, IIT Kanpur



Dr. Amit Sheth

Founding Director, Artificial Intelligence Institute,
University of South Carolina;
Cofounder and Chief Advisor ezDI, LLC



Mr. Nagaraju Srirama

President and Director, JK Fenner (India) Limited



Academics at JKLU

*Become a More Innovative
Engineer, Manager,
or Designer.*



Institute Of Engineering & Technology

Learn future-ready technologies



R

Robotics & Automation

An extension of Robotics, Automation is termed as the next phase of the Industrial Revolution. It will create fresh avenues for businesses and individuals, and offers unprecedented opportunities to create and build intelligent systems that are smarter and more efficient.



AI

Artificial Intelligence & Machine Learning

Together with Machine Learning, an important subset, Artificial Intelligence is at the forefront of technology today. Several industries, from medicine, banking and retail, are likely to be disrupted and transformed by the future of computing.



IoT

Internet Of Things

The rapid advancement of the Internet, and the new reality it has shaped by bringing together a wide range of contexts, people, processes, data and technology, is an exciting frontier of change today. It touches every aspect of our lives, and understanding this new world leads to greater innovation, progress and business.



DT

Design Thinking

A human-centered approach to innovation, design thinking focuses on integrating the needs of society, technology and business. It encourages project-based pedagogy and effective frameworks for creative problem solving in all aspects of learning.



Options for multidisciplinary specializations in high-demand cutting-edge areas.

COMPUTER SCIENCE AND ENGINEERING

Students can do a specialization in Data Science, Embedded Systems and IoT, AI and ML, Cloud Computing, Blockchain and Web3, AR/VR and Gaming, Cyber Security, Signal Processing and Computer Vision, and receive professional certifications from Cisco, UI Path and other global organizations.

COMPUTER AND COMMUNICATION ENGINEERING

Students can do specialization in IoT and Embedded Systems, Cyber Security, Signal Processing and Computer Vision, and interdisciplinary specialization in Robotics and Automation, Product Design, UI/UX and HCI, and Entrepreneurship.



Olin College of Engineering

At the core of student-centric programmes at JKLU is the PROJECT BASED LEARNING methodology designed with the support of **Olin College of Engineering, Boston, US**. Olin was ranked among the top 3 undergraduate engineering programmes in the US in 2019.

Opportunity to learn at the best institutions in the world

JKLU provides a unique opportunity to study one semester at an IIT. Various students have benefited from this opportunity. Exchange of students, faculty, knowledge and researchers with national and international universities helps our students to get an edge in today's advancing world. We also collaboratively create multidisciplinary courses that nurture various skills. Get a chance to experience the semester exchange programme with University of Florida, St. Cloud State University, IIIT Delhi, IIT Gandhinagar, IIT Jammu, and IIT Bhilai.

“JKLU has provided me the opportunity to pursue one semester at IIT Gandhinagar under the student exchange program. This program has helped me to gain in-depth knowledge on my subjects, as well as improving my communication and networking skills, and facilitating my work in the competitive environment at IIT. The teaching pedagogy of JKLU has helped me to set high goals for myself and strive for excellence in my field of study”.

Jaya Sodhani | B. Tech. (Batch 2020-24) Student



Institute of Management



*A progressive 21st-century programme
that aims to create future global leaders
for business and society.*

The Institute believes in bringing industry into the classroom with extensive participation of senior practitioners in teaching and mentoring students, a blend of case studies, studios and projects. Students take advantage of courses in technology, design, liberal arts and critical thinking to develop the skills and entrepreneurial mindset required to succeed in their chosen career.

JKLU's BBA Programme

Entrepreneurship

The BBA Entrepreneurship program allows students to earn a degree and become entrepreneurs. It includes learning at JKLU's Start-up Studio and access to Atal Incubation Centre and BizLab in collaboration with AIMA.

Banking and Fintech

Our program teaches students about modern Banking and Fintech with industry experts, and provides internships for real-life experience. Industry partners include top digital and non-banking finance companies in India.



Emphasis on developing professionals with industry-ready skills.



Senior industry practitioners to guide and counsel the students.



Exposing students to present-day business scenarios with contextual curriculum.



Courses taught by expert faculty and senior practitioners.



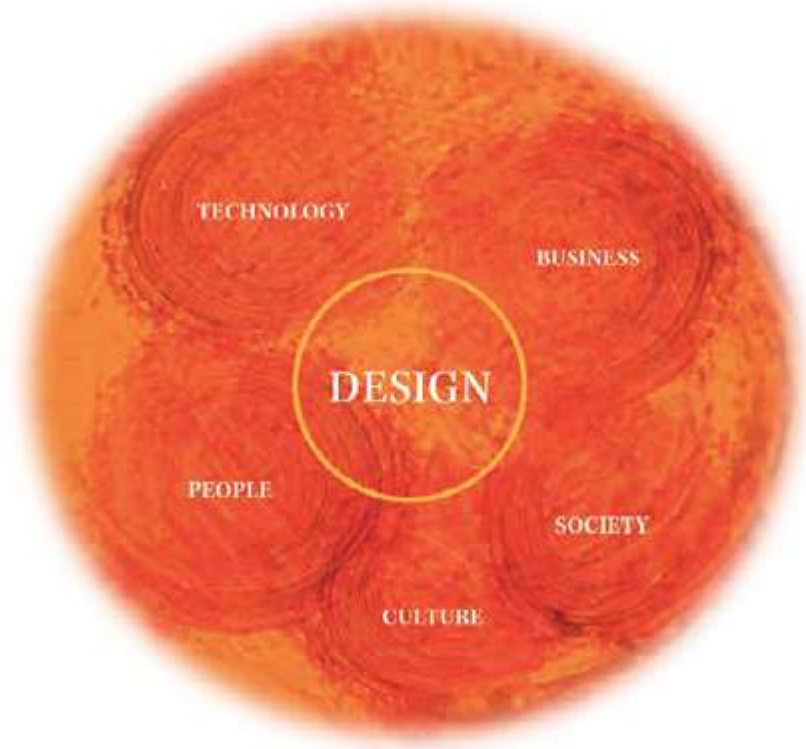
Multidisciplinary curriculum including new-age themes.

Interdisciplinary

The program offers a management foundation, technology and design courses, and flexible specializations. Industry experts and experienced faculty teach students how technology and design affect customer experiences, creating versatile graduates for the new-age economy.

Institute of Design

Sitting at the intersection of Technology, Business, Society, Culture and People, the design curriculum at JKLU draws from how students learn at the world's leading design schools.



Academic Collaboration



Edinburgh Napier University, UK

Ranked 1st among modern Universities in Scotland

**INNOVATIVE 4-YEAR
UNDERGRADUATE
PROGRAMMES IN
AREAS WITH HIGH
DEMAND FOR TALENT**

Product Design

The Product Design program at JKLU uniquely combines both strategic and tactical competencies, from idea generation to commercialization, used to create products. Students learn and practice systematic approaches to conceptualize and evaluate ideas, turning them into tangible inventions and products. They will experience combining art, science, and technology to create new products that people can use.

Interaction Design

In this program, students will deepen their understanding of the core design discipline with a focus on the interaction of users with products, services, devices and with each other. Computers, home appliances, mobile devices, apps, all have a focus on maximizing usability and user experience. The goal of interaction design is to make the user's interaction as simple and efficient as possible, in terms of accomplishing user goals. This is one of the most sought after skills in today's technology driven businesses around the world.

Interdisciplinary Design

The Interdisciplinary Design program is a unique opportunity for students who want to understand the breadth of design and explore its various facets. It gives students a lot of flexibility to choose their courses and they can later opt to go deeper in areas that interest them, or be highly valuable generalists who can work across a range of problems and situations.

Integrated Communication Design

Integrated Communication design is the practice of planning and shaping a message in content, form and delivery. Communication designers craft effective and expressive ways to share ideas with others, using an approach focusing on both problem-solving and persuasion.



M. P. Ranjan-JKLU Design Resource Centre

The M. P. Ranjan-JKLU Design Resource Centre, situated at the heart of JK Lakshmipat University, aims to make available the personal collection of books of Prof. M P Ranjan, erstwhile Principal Designer at the National Institute of Design, Ahmedabad.

The Centre has been built with the gorgeous collection from Ranjan's family. With over 1200 books on a wide range of subjects, the M. P. Ranjan-JKLU Design Resource Centre aims to cater to the design community and everybody else interested in design.

Thoughtspot

Thoughtspot is a stage that welcomes people from diverse disciplines and cultures to share their unique stories, experiences and journeys. Being a global platform, Thoughtspot enables speakers, personalities and eminent professionals around the world to connect for sharing ideas and stories to inspire others in turn.

This initiative by JK Lakshmipat University has been taken to create more engagement with students, professionals, culturists, curators and academicians on a larger scale, and to provide them with a platform for curating knowledge to increase visibility among global shapers and thinkers, establishing the University's core values that mainly revolve around innovation and collaboration.

*Learn with the Confidence of
Outstanding Placement Support*



Career Services

Over the past few years, almost every student, interested in a job after graduation, has been placed. Since the last two years, the placement record has been 100% with students being able to secure placements in leading organizations and pursue promising careers in their respective chosen fields.

B.Tech. 2022

BBA 2022

Average Salary Offered	7.07L	Average Salary Offered	5.33L
Highest Salary Offered	15.25L	Highest Salary Offered	8.00L

The average offer in B.Tech. in 2022 stood at Rs 7.07 Lakhs and in BBA Rs 5.33 Lakhs. The highest salaries were Rs 15.25 Lakhs and Rs 8.00 Lakhs respectively. These are almost double of the corresponding figures of 2021.

Centres Of Excellence



Creating opportunities for students to develop cutting-edge capabilities, working with Industry and expanding horizons through research.

Atal Incubation Centre



AIC-JKLU FUNDED STARTUPS:



Atal Incubation Centre, JK Lakshmipat University has been established with the support of AIM, NITI Aayog and JK Lakshmipat University in 2019. In the last 3 years, AIC-JKLU has supported 50 startups in various sectors, including Fin-tech, Ed-Tech, EVs, Agritech and more. It has been consistently rated as one of the top-performing Incubation Centres in the AIM network. The AIC, due to its association with JKLU, is uniquely able to provide start-ups access to interdisciplinary resources such as high-end computing facilities, design facilities and engineering labs (33+ labs), coupled with expert resources in the areas of business, technology and design (43+ mentors & 33+ partners). In the coming years, AIC-JKLU aims to build an ecosystem to focus specifically on Longevity, Economy & Energy.

MENTORS ASSOCIATED

Sundeep Tibrewal

(Director AIC-JKLU)
Partner, AirDhan; Capital Advisor,
Founder & CEO, Glad2Shop
Technologies Pvt. Ltd.

Keshav Sharma

(Director AIC-JKLU)
Founder, Metacube Software
Pvt. Ltd.

Apoorv Bamba

Co-Founder & CEO of
Ingenious Faces

Mahavir Pratap Sharma

Chair, TiE India Angels
and RAIN

Madhup Bansal

CEO, True Wholesale

Tushar Vadera

Co-Founder, Set My Cart

Nitish Rao

Co-Founder & Director,
Celerix Technologies

Saurabh Trivedi

Co-Founder & Director at
Boudhik Ventures Pvt. Ltd.

Centre for Communication and Critical Thinking

The Centre for Communication and Critical Thinking (CCCT) is a key innovation of JK Lakshmipat University that uses the constructs of liberal arts, scientific temper, group dynamics, and interpersonal communication to achieve personal and professional growth amongst its students.

The Centre enhances students' learning and growth journey through credited courses, communication labs, and diverse events. Six unique courses, focusing on the capacity building of students across the areas of communication, critical thinking, negotiation, problem-solving, and decision making, have been developed by the Centre. These learning pathways are offered as core courses across the university, alongside the discipline-specific courses for all programmes.



An Active Learning Approach is used to teach these courses. All of them include activities that encourage students to undertake tasks so as to practice and develop their skills, as opposed to passive learning, where information is simply passed on to them. Besides courses, students attend 10-12 hours of compulsory Communication Laboratory, where they practice thinking, writing, and speaking. Personalized learning pedagogy is used to help each student improve their writing and speaking abilities over time. The formats that are used to conduct the lab sessions include:

- **Reading Circles | Think**
- **Focused Groups | Write**
- **Public Speaking | Speak**
- **Open Office Hours | Mentor**

The third important aspect of CCCT is Events. These create awareness and offer students exposure to diverse topics through an external interface, including expert talks, workshops and field visits. The students also organize events that build confidence and improve their organizational and communication skills.

The Centre's contribution towards the capacity building of students is acknowledged by our alumni as one of the most important aspects that has helped them to become better professionals. In a student perception survey conducted by the Centre, most of them agreed that their presentation, confidence, and thinking skills have greatly improved due to CCCT interventions. The students' testimony is further supported by the skill enhancement displayed by them during summer internships and in their final placements, which is very encouraging. CCCT initiatives, along with other academic practices of the university, lead not just to augmenting the job preparedness of our students, but also prepare them for life in general. The Centre for Communication and Critical Thinking acts as a Conscience Keeper- safeguarding the values enshrined by JK Lakshmipat University, for a better citizenry.

Centre For Design Research



The Institute of Design has set up the Centre for Design Research to take on professional research and consulting projects in all areas of Design.

The Centre brings professional projects to the classroom and brings an academic rigour to professional assignments. It lies at the intersection of a research lab, a professional studio and the classroom. The Centre works on assignments from industries and businesses that require academic and research rigour. It conducts awareness workshops for all stake-holders to perpetuate the cause of design. It leads research activities in design for the public good. The centre involves interested students in professional design assignments and documentation. The knowledge gained from the field is ploughed back into the curriculum.



Life @ JKLU





Located along the six-lane Jaipur-Ajmer expressway, within the city limits of Jaipur. The 30-acre campus in a modern, environmentally conscious and inviting space is designed to help students live, work and play in a setting that is safe, productive and student-centric. The campus offers separate living facilities for male and female students.

The residential Management Development Centre is equipped to host industry practitioners, visiting faculty and other guests.



Major Student Clubs



**Art
Club**



**Photography
Club**



**Literary
Club**



**Coding
Club**



**Competitive
Programming
Club**



**Drama
Club**



**Dance
Club**



**Astronomy
Club**



**Design
Club**



**Business/
Finance Club**



**Media
Club**



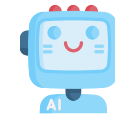
**Music
Club**



**Community
Development Club**



**Quiz
Club**



**Robotics
Club**



We, at JKLU, care about the mental health and well-being of our students, in addition to ensuring a good student and academic life at the campus for them.

For this, we provide our students assistance for emotional well-being. We give students 24X7 access to qualified counsellors, free of cost, with complete confidentiality and anonymity. It helps students resolve their stress, create healthy relationships, develop a more focused approach towards achieving their goal, build confidence, and develop the ability to deal with pressure of all kinds.



Admissions



2022



Programmes Offered

B.Tech.

Computer Science and Engineering | Computer and Communication Engineering | Computer Science and Artificial Intelligence

Specializations:

Data Science | Cloud Computing | Artificial Intelligence & Machine Learning | Blockchain and Web3 | Augmented and Virtual Reality (AR/VR) and Gaming | Cyber Security | Signal Processing | Embedded Systems and IoT.

Interdisciplinary Specializations:

Robotics and Automation | Product Design | UI/UX and Human Computer Interface | Entrepreneurship

M.Tech.

Data Science | Automation and Robotics | Health, Safety and Environmental Engineering

BCA

Specializations:

Robotics Process Automation | Data Analytics | AR-VR | Cloud Computing and Cyber Security

B.Des.

Specializations:

Product Design | Interaction Design | Interdisciplinary Design | Integrated Communication Design

M.Des.

Specializations:

Product Design | Interaction Design

BBA

Specializations:

Entrepreneurship | Banking and Fintech | Interdisciplinary

PG Diploma

Analysis & Research

PhD.

Engineering | Management | Design | Applied Sciences

Scholarships And Financial Aid

- **Scholarship based on Academic Performance in Class X & Class XII.**
Up-to 100% Scholarship on academic fee, in the first year of undergraduate study.
- **Scholarship based on National Level Entrance Exams (JEE Mains for B. Tech., JKLU DET Test for B. Des.).** Upto 100% Scholarship on academic fee in the first year of undergraduate study.
- **Scholarship based on exceptional performance in co-curricular activities (Sports, Cultural, Social Service etc.).** The scholarship level will upgrade by one level in case of exceptional achievements in any other sphere by the student.
- **Relaxation in Scholarship criteria for special cases.** Relaxation of 2% in X and XII percentage and 4% in JEE percentile for different categories such as Girl Student, Wards of Defense Personnel, SC/ST/PH, Students from North-East and all Union Territories (except Delhi).
- **On-campus opportunities.** The university also offers opportunities for on-campus assistantships and part-time jobs to exceptional students.
- Other applicants with exceptional achievements will be eligible for **50% scholarship on academic fee.**

The scholarship offered by JKLU is applicable for the duration of the programme, subject to maintaining the required CGPA.

For more details on fees and scholarships, visit:

www.jkl.edu.in

Eligibility Criteria

Institute Of Engineering & Technology

NAME OF COURSE	ELIGIBILITY
B.Tech.	Minimum 60% aggregate in both class 10th and 12th for B. Tech. Class 10th Score: English, Maths, Social Studies, Science and fifth subject as per university norms. Class 12th Score (for B. Tech.): Physics, Chemistry, Maths and English (total of four subjects)
M.Tech.	Minimum 60% marks or equivalent CGPA in B.E./B.Tech./M.Sc./MCA
BCA	Minimum 60% aggregate in both class 10th and 12th Class 10th Score: English, Maths, Social Studies, Science and fifth subject as per university norms. Class 12th Score: English, Maths/Physics/Economics/ Accountancy/ Computer Science/Informative Practices and two subjects as per university norms.

Institute Of Management

NAME OF COURSE	ELIGIBILITY
BBA	Minimum 60% aggregate in both class 10th and 12th Class 10th Score: English, Maths, Social Studies, Science and fifth subject as per university norms. Class 12th Score: English and three subjects as per university norms (total of four subjects).
PG Diploma In Analysis and Research	Minimum 75% in an undergraduate (Bachelor's) degree in any discipline from an accredited institution or university.

Institute Of Design

NAME OF COURSE	ELIGIBILITY
B.Des.	Minimum 60% aggregate in both class 10th and 12th. Class 10th: English, Maths, Social Studies, Science and fifth subject of applicant's choice. Class 12th: English and three subjects as per University norms (total of four subjects).
M.Des.	Minimum 60% marks or equivalent CGPA in a Bachelor's degree or equivalent in any discipline from a recognized university.

For more details visit www.jklu.edu.in

Facilities

Hostel Accommodation

Non-AC Accommodation Rs. 65,000 per year

AC Accommodation Rs. 80,000 per year

Mess Advance Rs. 55,000 (to be adjusted as per actuals) per year

Hostel Security Deposit of Rs. 5,000 would be payable along with first year's fees. It is refundable at the time of leaving the Hostel.

Hostel rooms are on twin/triple sharing basis. Hostel charges are subject to yearly revision. Utility charges for **Non-AC** accommodation are Rs. 10,000/- per year. **AC** accommodation incurs an additional charge of Rs. 25,000/- per year.

Transport

AC Bus Facility Rs. 40,000/- per year (Subject to change)

Applicable if the student wishes to avail the JKLU transport facility from Jaipur city to JKLU campus on specified routes. This is subject to yearly revision.

Our Legacy



Our optimism for the future is guided by, and built on, the strong foundations of the past. The JK Organisation is one of India's most respected nation builders and has a proud history of being committed to India's potential for growth and progress for nearly 125 years. It has successful businesses across a range of industries, including JK Tyre, JK Paper, JK Lakshmi Cement, JK Agri Genetics and JK Fenner India. JKLU is a proud member of this heritage, as a philanthropic initiative of the Lakshmipat Singhania Education Foundation.



Led by its key architect, the late Lala Lakshmipat Singhanian (1910-1976), who was inspired and driven to create India's intellectual capital, JK Organisation has been at the forefront of philanthropic initiatives in education and healthcare. The late Harishankar Singhanian (1933-2013) ably carried forward the legacy of inspiration and commitment to education, as President (Chairman) of the JK Organisation, as well as the Chancellor of JKLU. The vision and mission of the founders continues to be the bedrock of the university's ethos and its promise to play a significant role as a nation builder.





“At JKLU, we want to bring together best-practices from academia around the world and many innovations that I have seen to be successful in my experience of creating world-class institutions in India”.

Dr. Pramath Raj Sinha

Member, Board of Management, JKLU

Founding Dean, ISB Hyderabad; Founding Trustee,
Ashoka University

“We are building a university where students are at the centre of everything we do. Our faculty and administration are continuously innovating and our academic facilities, curriculum, residences are rapidly evolving to help our students become successful in life”.

Asheesh Gupta

Pro Vice-Chancellor

Former Consultant at McKinsey & Company
and Director of McKinsey's Knowledge and
Research Centres in India

PROSPECTUS 2023



Board Of Management

Shri Bharat Hari Singhania

President, JK Organisation, Chancellor,
JK Lakshmiipat University

Dr. R. P. Singhania

Chairman & Managing Director,
JK Tyre & Industries Ltd.
Pro Chancellor, JK Lakshmiipat University

Shri H. P. Singhania

Vice Chairman & Managing Director
JK Paper Ltd.;
Pro Chancellor, JK Lakshmiipat University

Dr. Dheeraj Sanghi

Vice Chancellor, JKLU; Former Dean,
Academic Affairs, IIIT Delhi; Former
Professor, IIT Kanpur; Former Director,
LNMIIT, Jaipur & Punjab Engineering
College, Chandigarh

Smt. Vinita Singhania

Vice Chairman & Managing Director,
JK Lakshmi Cement Ltd.

Shri Surendra Malhotra

Former MD, Orissa Synthetics Ltd.;
Senior Management and Engineering
Professional

Dr. S. Chouksey

Advisor, JK Lakshmi Cement LTD.; Former
President of Cement Manufacturers
Association; Former Chariman,
National Council for Cement and
Building Materials

Dr. Ashutosh Sharma

Institute Chair Professor, INAE;
Visvesvarya Chair Professor & Coordinator,
DST Unit on Nanoscience and Center for
Environmental Science and Engineering,
Indian Institute of Technology, Kanpur

Dr. Pramath Raj Sinha

Founding Dean, ISB Hyderabad
Founding Trustee, Ashoka University;
Founder & MD, 9.9 Group

Shri Saurabh Srivastava

Co-founder & Former Chairman,
NAASCOM (Padma Shri Awardee)

Shri S. K. Roongta

Former CMD, Steel Authority of India

Shri Sanjay Jain

Former Managing Director,
Global Capability Network, Accenture

Shri Ajay Shankar

IAS; Former Secretary (Industry),
Government of India

Shri Prem Singh

President (Corporate HR), JK Tyre &
Industries Ltd.

Shri Sunil Sharma, IAS

Commissioner, Department of College
Education, Government of Rajasthan

Smt. Renu Sud Karnad

Managing Director, HDFC Ltd.

CA K.K. Maheshwari

Officiating Registrar,
JK Lakshmiipat University

Contact Info

JK Lakshmipat University,
Near Mahindra SEZ, Ajmer Road,
Jaipur, Rajasthan, India—302026

Admission Office

Helpline No. : **+91 830 222 3344**
Phone : **+91 141 7107 513/36**
Email : **admissions@jklu.edu.in**

Administrative office

Phone : **+91 830 2223 344**







A Philanthropic Initiative Of The 125-Year Old JK Organization



PROSPECTUS 2023